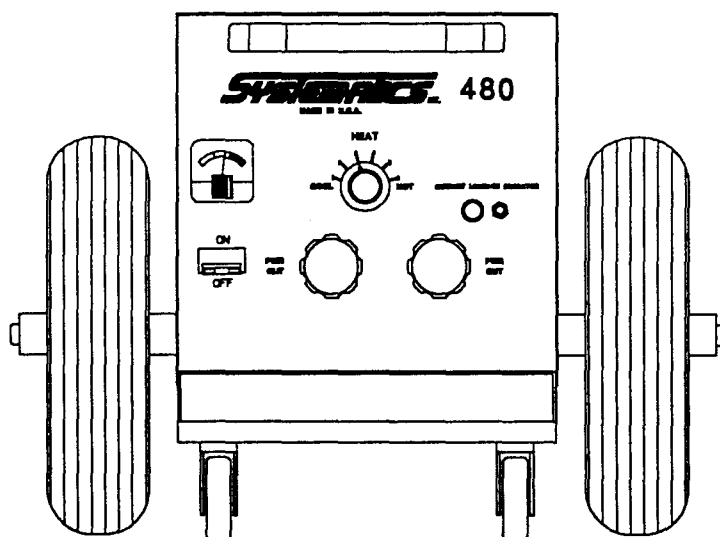


IB 480



SERVICE MANUAL

FOR
SERIAL NUMBERS IB8-100 AND LATER

CONTENTS

VIEW	DESCRIPTION	PAGE
FIGURE 1	SCHEMATIC DIAGRAM	3
FIGURE 1A	SCHEMATIC DIAGRAM, CLS	3
FIGURE A	FRONT VIEW	4
.....	PARTS LIST	5
FIGURE B	RIGHT SIDE VIEW & INTERNAL COMPONENTS	6
.....	PARTS LIST	7
FIGURE B1	PRINTED CIRCUIT BOARD (HG-527)	8
.....	PARTS LIST	9

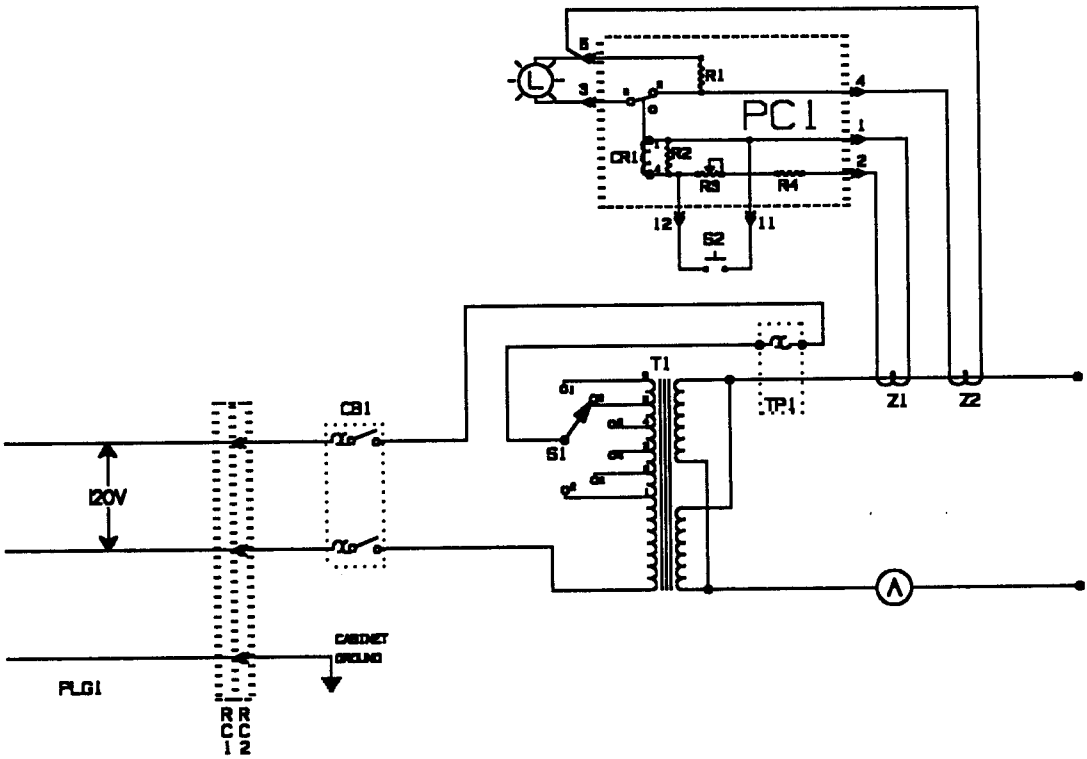


FIGURE 1 - SCHEMATIC DIAGRAM

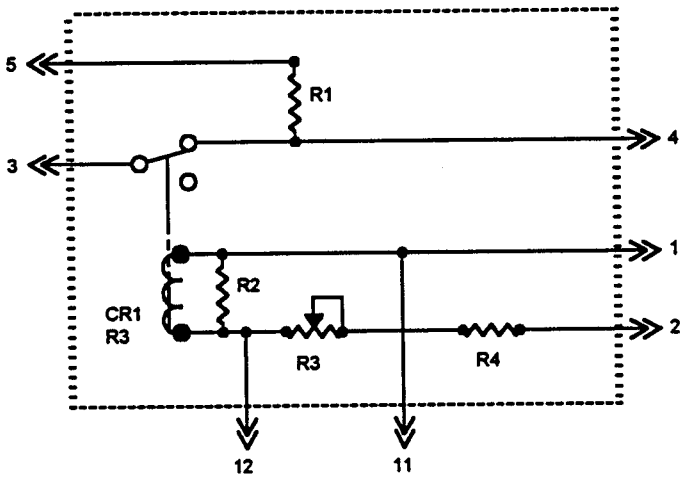


FIGURE 1A - SCHEMATIC, CLS

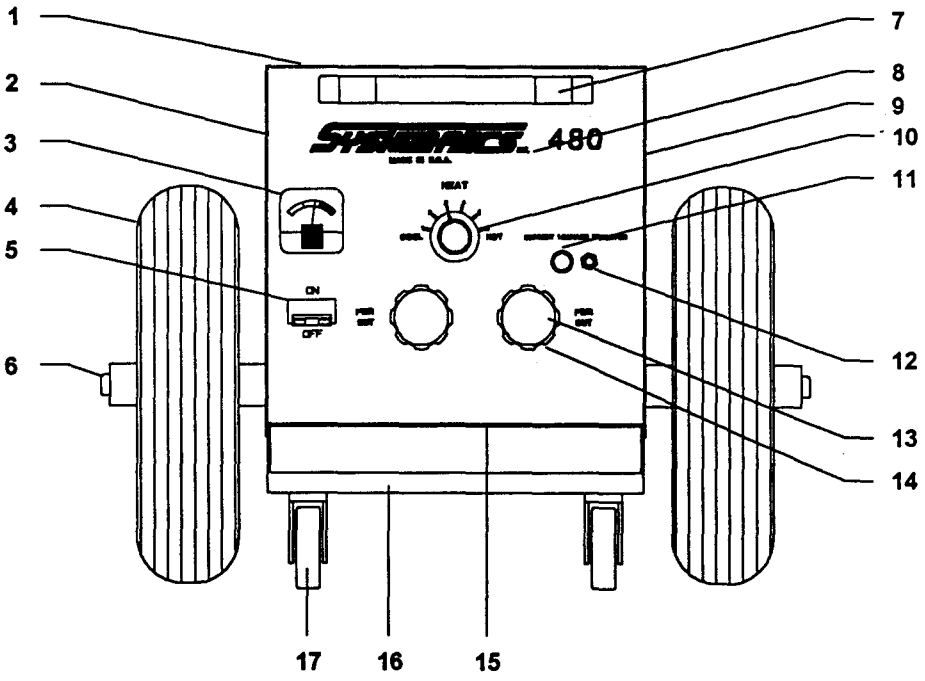


FIGURE A - FRONT VIEW

FIGURE A

ITEM NO.	DIA. MKGS.	PART NO.	DESCRIPTION	QTY.
1		IB-407	TOP	1
		LB-1201	LABEL, WARNING	1
2		IB-406	SIDE, LEFT	1
3	A	PH-115	METER, HEAT SELECTION RANGE	1
		SH-109	PLATE, METER	1
4		IB-122-16	REAR WHEEL, 16" PNEUMATIC	2
5	CB1	FM-382	CIRCUIT BREAKER, 25 AMP	1
6		IB-117	AXLE	1
7		PH-05	HANDLE	1
8		IB-408	FRONT	1
9		IB-404	SIDE, RIGHT	1
10		MI-330A	KNOB, HEAT SELECTOR	1
11	L	BW-337	INDICATING LIGHT, CLS, COMPLETE	1
		BW-338	BULB ONLY, NEON	1
12	S2	FW-68	SWITCH, PUSH-BUTTON	1
13		MI-440	KNOB, TERMINAL	2
14		MI-246	WELD CONNECTOR	2
		FW-72	NUT, CONNECTOR	2
15		IB-402	BASE	1
16		PY-212	CASTER BRACKET	1
17		MI-121-3	CASTER, 3" FRONT	2

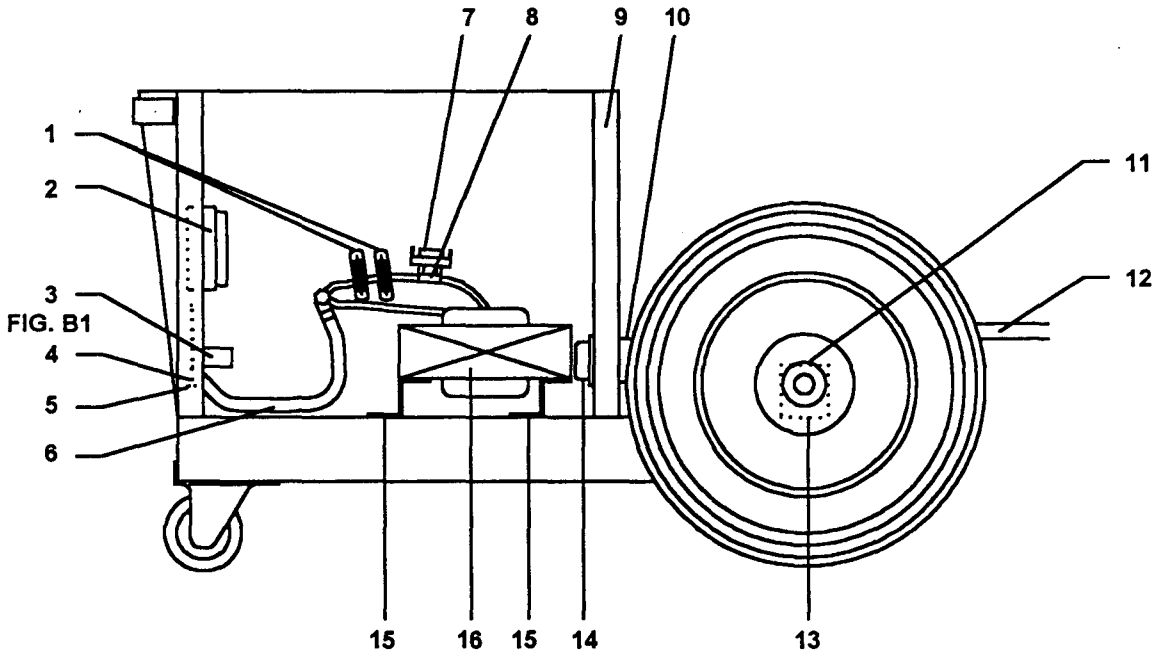


FIGURE B - RIGHT SIDE VIEW & INTERNAL COMPONENTS

FIGURE B

ITEM NO.	DIA. MKGS.	PART NO.	DESCRIPTION	QTY.
1	Z1,2	ST-12	COIL, TOROID	2
2	S1	MI-463	SWITCH, HEAT	1
	"	FM-163	", (SERIAL # IB8-100 AND LATER)	1
3	PC1	HG-527	CLS PRINTED CIRCUIT BOARD (FIGURE B1)	1
4		MI-185	EDGE CONNECTOR	1
5		FW-304	BRACKET, CONTROL	1
6		SH-116	SHUNT, #2 COPPER CABLE	1
7	TP1	HG-428	THERMAL SWITCH	1
8		HG-427	BRACKET, THERMAL SWITCH	1
9		IB-403	BACK	1
10	RC1	FM-631	PLUG, MOTOR BASE (120V-30A)	1
11		PY-117C	CAP, AXLE	2
		MI-117W	WASHER, AXLE	4
12	PLG1	20CP-140	POWER INPUT CABLE, 20'	1
13		IB-412	BRACKET, AXLE (HIDDEN)	2
14	RC2	FM-630	RECEPTACLE, MOTOR BASE (120V-30A)	1
15		PH-04	BRACKET, TRANSFORMER	2
16	T1	IB-308	TRANSFORMER, POWER (INCLUDES BRACKETS)	1

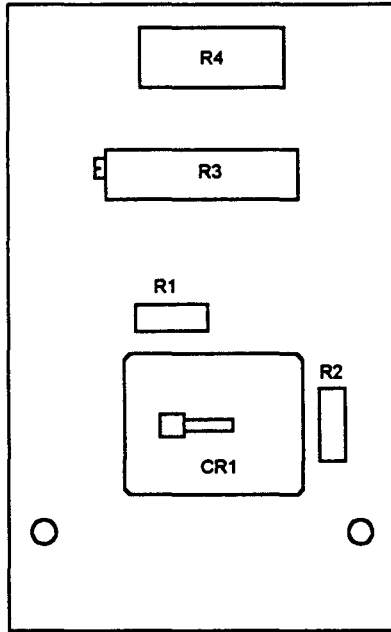


FIGURE B1 - PRINTED CIRCUIT BOARD (HG-527)
(ACTUAL SIZE)

FIGURE B1

ITEM NO.	DIA. MKGS.	PART NO.	DESCRIPTION	QTY.
CR1		IB-276	RELAY, CLS	1
		IB-236	RELAY SOCKET, CLS	1
R1,2		CB-046	100K RESISTOR, 1/2 W	2
R3		IB-210	10K TRIM RESISTOR, CLS	1
R4		MI-341	12K RESISTOR, 2W	1